



# ALABAMA 911 BOARD

**February 8, 2022**  
**Talk About It Tuesday!**

# Introduction & Contact Information

**Leah Missildine**

**Executive Director for the Alabama 9-1-1 Board**

Email: [leah@al911board.com](mailto:leah@al911board.com)

Phone: 334-440-7911

**Anderson Brooms**

**GIS Program Manager for the Alabama 9-1-1 Board**

Email: [anderson@al911board.com](mailto:anderson@al911board.com)

Phone: 334-440-7911



# Agenda

February 8, 2022

- GIS Project
  - Deadlines
  - Where do we go from here?
  - Hosted Aerial Imagery



	Legacy State	On-boarding	Intra-jurisdictional Data Remediation		Cross-jurisdictional Data Remediation	Provision to NG911	Maintenance
Action(s) Necessary	<ul style="list-style-type: none"> <li>None</li> </ul>	<ul style="list-style-type: none"> <li>Upload Data</li> <li>Gap 1 Report &amp; Changes</li> <li>Onboard into VEP</li> <li>Gap 2 Report &amp; Changes</li> </ul>	<ul style="list-style-type: none"> <li>Validator Training</li> <li>Editor Training</li> <li>Run Validations</li> <li>Generate &amp; Correct Anomaly Reports</li> <li>Remediate into Standards-based Schema</li> </ul>		<ul style="list-style-type: none"> <li>Same as previous Phase, but with your neighbors</li> </ul>	<ul style="list-style-type: none"> <li>Export to Enterprise Systems</li> <li>Provision to Spatial Interface</li> <li>Ingest into NGCS</li> </ul>	<ul style="list-style-type: none"> <li>Maintain NG911 Dataset</li> <li>Add all the data layers an ECD wants</li> <li>Amend as schema or standards change</li> </ul>
# of ECDs in this Phase	4	24	57		-	-	-
	1. Fayette 2. Irondale 3. Lawrence 4. Marion	1. Adamsville 2. Auburn 3. Butler 4. Clay 5. Cleburne 6. Conecuh 7. Coosa 8. Covington 9. DeKalb 10. Elmore 11. Etowah 12. Franklin 13. Gardendale 14. Greene 15. Hale 16. Lauderdale 17. Lee 18. Montgomery City 19. Morgan 20. Mountain Brook 21. Russell 22. Shelby 23. Sumter 24. Tarrant	1. Calhoun 2. Cherokee 3. Choctaw 4. Cullman 5. Autauga 6. Barbour 7. Bibb 8. Bullock 9. Chambers 10. Coffee 11. Colbert 12. Crenshaw 13. Daleville 14. Dallas 15. Enterprise 16. Henry 17. Homewood 18. Houston 19. Macon 20. Madison 21. Marshall 22. Montgomery County 23. Randolph 24. Talladega 25. Tuscaloosa 26. Vestavia Hills 27. Washington 28. Wilcox	29. Baldwin 30. Bessemer 31. Birmingham 32. Blount 33. Chilton 34. Clarke 35. Dale 36. Escambia 37. Ft Payne 38. Geneva 39. Hoover 40. Hueytown 41. Jackson 42. Jefferson 43. Lamar 44. Limestone 45. Lowndes 46. Marengo 47. Midfield 48. Mobile 49. Monroe 50. Perry 51. Pickens 52. Pike 53. Pleasant Grove 54. St Claire 55. Tallapoosa 56. Walker 57. Winston			



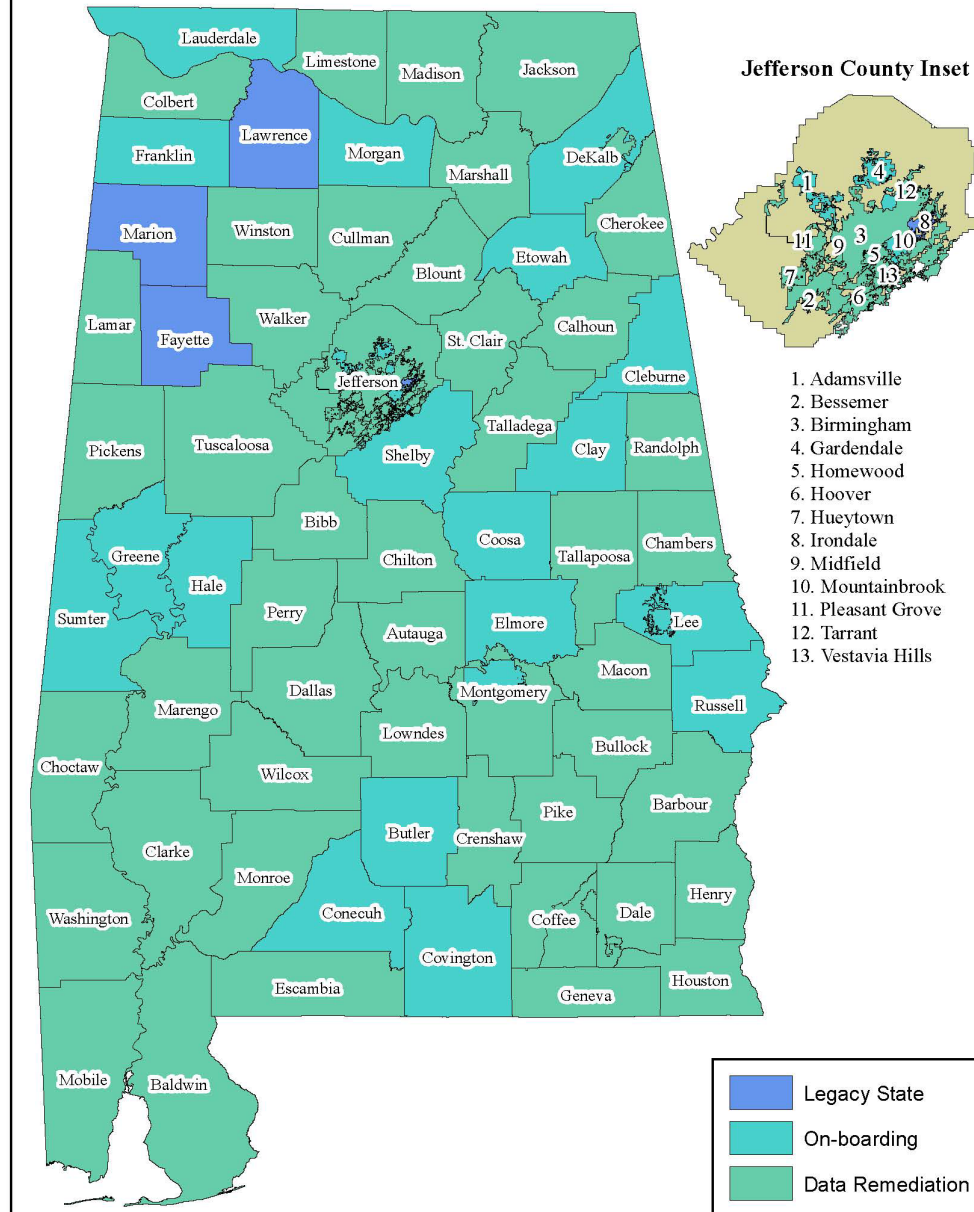
# GIS Project Deadlines

---

- Legacy State – February 18<sup>th</sup>, 2022
- On-boarding – March 31<sup>st</sup>, 2022
- Data Remediation - December 31<sup>st</sup>, 2022
- Boundary Facilitation - December 31<sup>st</sup>, 2022



# ECD GIS Data On-Boarding Phase



Legacy State	On-boarding	Intra-jurisdictional Data Remediation	
<ul style="list-style-type: none"> <li>None</li> </ul>	<ul style="list-style-type: none"> <li>Upload Data</li> <li>Gap 1 Report &amp; Changes</li> <li>Onboard into VEP</li> <li>Gap 2 Report &amp; Changes</li> </ul>	<ul style="list-style-type: none"> <li>Validator Training</li> <li>Editor Training</li> <li>Run Validations</li> <li>Generate &amp; Correct Anomaly Reports</li> <li>Remediate into Standards-based Schema</li> </ul>	
<b>4</b>	<b>24</b>	<b>57</b>	
<ol style="list-style-type: none"> <li>1. Fayette</li> <li>2. Irondale</li> <li>3. Lawrence</li> <li>4. Marion</li> </ol>	<ol style="list-style-type: none"> <li>1. Adamsville</li> <li>2. Auburn</li> <li>3. Butler</li> <li>4. Clay</li> <li>5. Cleburne</li> <li>6. Conecuh</li> <li>7. Coosa</li> <li>8. Covington</li> <li>9. DeKalb</li> <li>10. Elmore</li> <li>11. Etowah</li> <li>12. Franklin</li> <li>13. Gardendale</li> <li>14. Greene</li> <li>15. Hale</li> <li>16. Lauderdale</li> <li>17. Lee</li> <li>18. Montgomery City</li> <li>19. Morgan</li> <li>20. Mountain Brook</li> <li>21. Russell</li> <li>22. Shelby</li> <li>23. Sumter</li> <li>24. Tarrant</li> </ol>	<ol style="list-style-type: none"> <li>1. Calhoun</li> <li>2. Cherokee</li> <li>3. Choctaw</li> <li>4. Cullman</li> <li>5. Autauga</li> <li>6. Barbour</li> <li>7. Bibb</li> <li>8. Bullock</li> <li>9. Chambers</li> <li>10. Coffee</li> <li>11. Colbert</li> <li>12. Crenshaw</li> <li>13. Daleville</li> <li>14. Dallas</li> <li>15. Enterprise</li> <li>16. Henry</li> <li>17. Homewood</li> <li>18. Houston</li> <li>19. Macon</li> <li>20. Madison</li> <li>21. Marshall</li> <li>22. Montgomery County</li> <li>23. Randolph</li> <li>24. Talladega</li> <li>25. Tuscaloosa</li> <li>26. Vestavia Hills</li> <li>27. Washington</li> <li>28. Wilcox</li> </ol>	<ol style="list-style-type: none"> <li>29. Baldwin</li> <li>30. Bessemer</li> <li>31. Birmingham</li> <li>32. Blount</li> <li>33. Chilton</li> <li>34. Clarke</li> <li>35. Dale</li> <li>36. Escambia</li> <li>37. Ft Payne</li> <li>38. Geneva</li> <li>39. Hoover</li> <li>40. Hueytown</li> <li>41. Jackson</li> <li>42. Jefferson</li> <li>43. Lamar</li> <li>44. Limestone</li> <li>45. Lowndes</li> <li>46. Marengo</li> <li>47. Midfield</li> <li>48. Mobile</li> <li>49. Monroe</li> <li>50. Perry</li> <li>51. Pickens</li> <li>52. Pike</li> <li>53. Pleasant Grove</li> <li>54. St Claire</li> <li>55. Tallapoosa</li> <li>56. Walker</li> <li>57. Winston</li> </ol>



# Where do we go from here?

---

## ➤ **Legacy State**

- Upload data

## ➤ **On-Boarding**

- Meet the Gap 1 & 2 requirements

## ➤ **Data remediation**

- Attend VEP training
- Begin working on your GIS data

## ➤ **Boundary Facilitation**

- Attend meeting and modify boundaries

## ➤ **Reach Data Maintenance**

- Provision GIS data to the SI
- Maintain all 7 layers in a NG 9-1-1 model compliant end state





# Bi-weekly VEP Routines

- Log in
- Upload data
- Run validations
- Download VEP Outputs

User Metrics Report for 01/01/22 - 02/07/22													
Athens/Limestone County ECD, AL													
#	User Name	Logins	Role	Total Login Time (hh:mm:ss)	Data Edits (update/delete/add)	Observations	Exceptions	Edit Sessions - Open	Edit Sessions - Approved	Edit Sessions - Rejected	Uploads - Approved	# of Downloads	# of Validation Runs
2	lillian@alc911.org	8	System Admin	15:50:26	0	0	0	0	3	0	3	0	3
Fort Payne Municipal ECD, AL													
#	User Name	Logins	Role	Total Login Time (hh:mm:ss)	Data Edits (update/delete/add)	Observations	Exceptions	Edit Sessions - Open	Edit Sessions - Approved	Edit Sessions - Rejected	Uploads - Approved	# of Downloads	# of Validation Runs
1	mbaker.gis@fortpayne.org	8	System Admin	13:07:45	0	0	0	0	8	0	8	2	8
Hoover Municipal ECD, AL													
#	User Name	Logins	Role	Total Login Time (hh:mm:ss)	Data Edits (update/delete/add)	Observations	Exceptions	Edit Sessions - Open	Edit Sessions - Approved	Edit Sessions - Rejected	Uploads - Approved	# of Downloads	# of Validation Runs
1	kevin.light@hooveralabama.gov	24	Validator	19:13:22	6	0	0	0	6	0	5	4	7
Talladega County ECD, AL													
#	User Name	Logins	Role	Total Login Time (hh:mm:ss)	Data Edits (update/delete/add)	Observations	Exceptions	Edit Sessions - Open	Edit Sessions - Approved	Edit Sessions - Rejected	Uploads - Approved	# of Downloads	# of Validation Runs
1	vkennedy@talladega911.org	6	System Admin	08:29:51	0	0	0	0	0	0	0	0	3
2	mdickinson@talladega911.org	14	Validator	08:59:44	0	0	0	1	3	0	3	4	2
Tallapoosa County ECD, AL													
#	User Name	Logins	Role	Total Login Time (hh:mm:ss)	Data Edits (update/delete/add)	Observations	Exceptions	Edit Sessions - Open	Edit Sessions - Approved	Edit Sessions - Rejected	Uploads - Approved	# of Downloads	# of Validation Runs
1	mike@tallapoosa911.org	9	System Admin	09:53:56	0	0	826	0	2	0	2	3	3



@alabama911board



Alabama 9-1-1 Board



@al911board



http://al911board.com



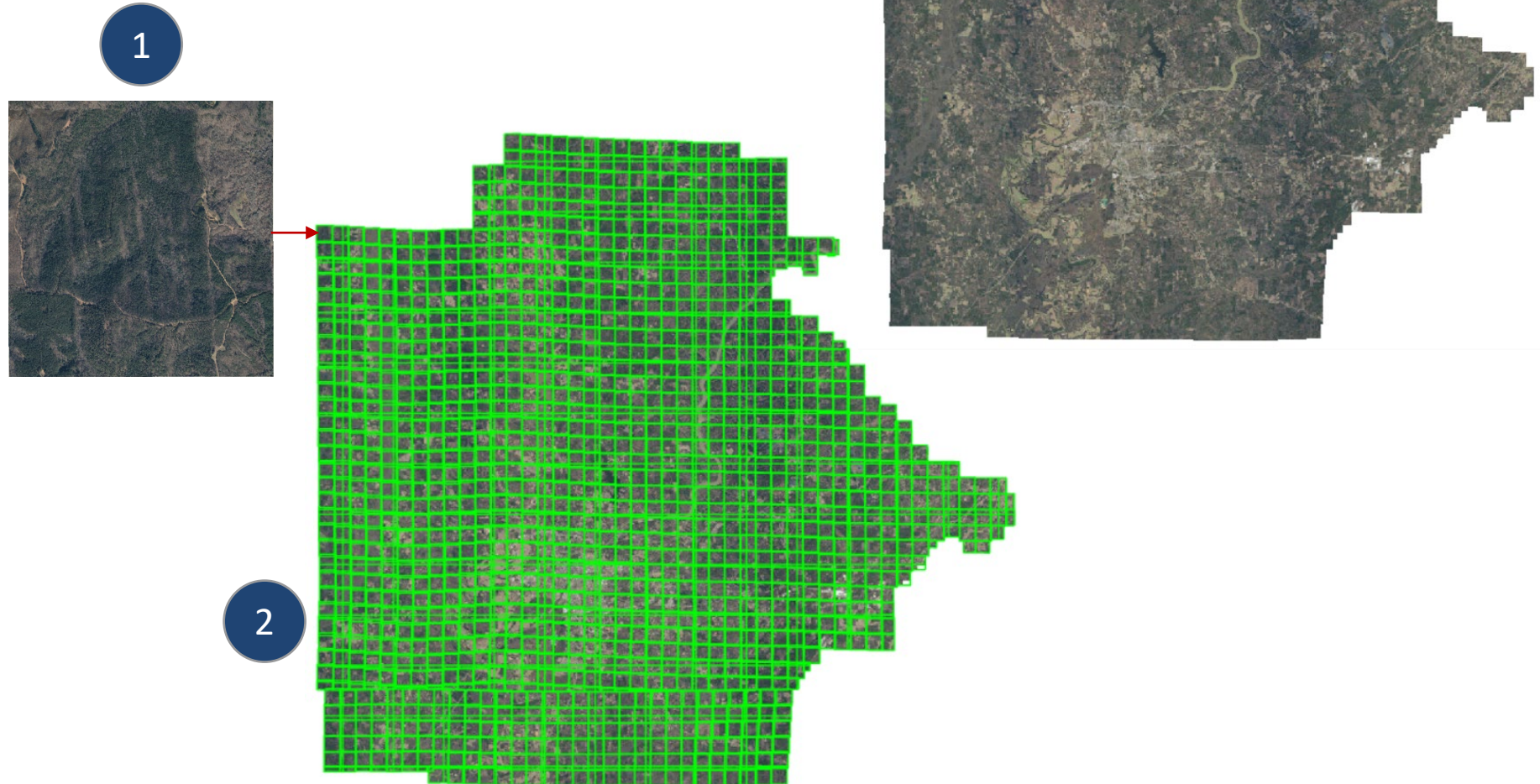
# State of Alabama Imagery

---

- **Splitting out the vintages of data**
  - Data flown for 2016, 2017, 2018, 2019, and 2020
- **Varying resolutions of the data**
  - 1 foot; 9", 6", 3"
- **Missing data**
  - Tallapoosa
  - Central Talladega
- **White Borders**
- **Mosaic dataset rendering**
- **No Cost to all ECDs statewide**
  - Hosted as REST endpoint
  - Must consume in an HTTPS URL
  - Requires a username and password



# Imagery Processing



# Imagery Statistics



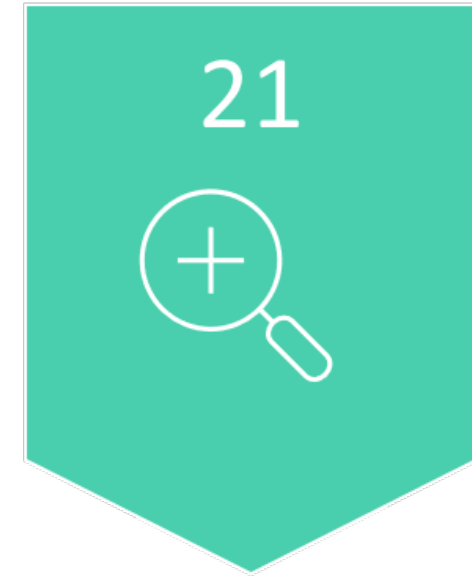
INDIVIDUAL TILES



TERABYTES OF RAW  
DATA



TERABYTES OF TILE  
CACHE (AND GROWING)

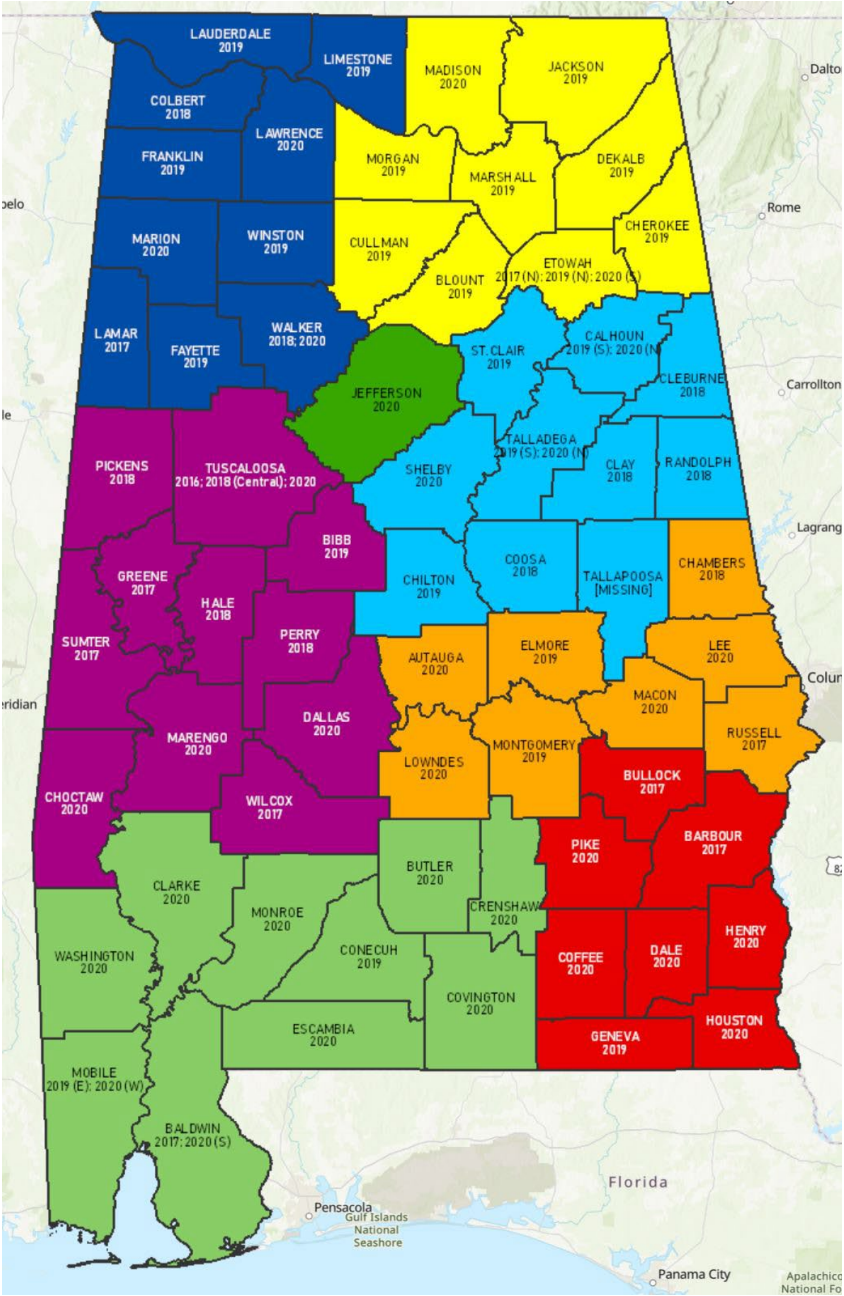


LEVELS OF DETAIL

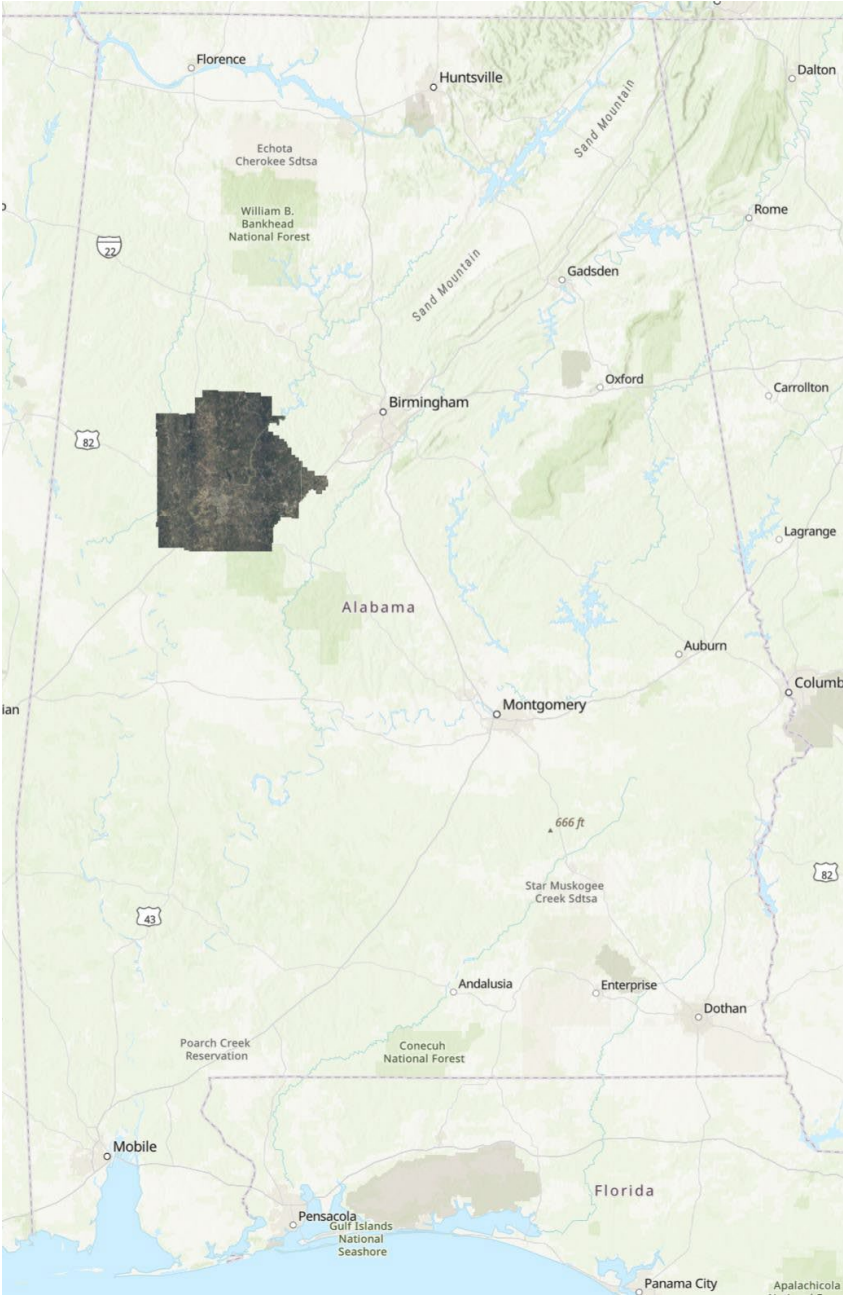




Imagery  
Year  
Reference

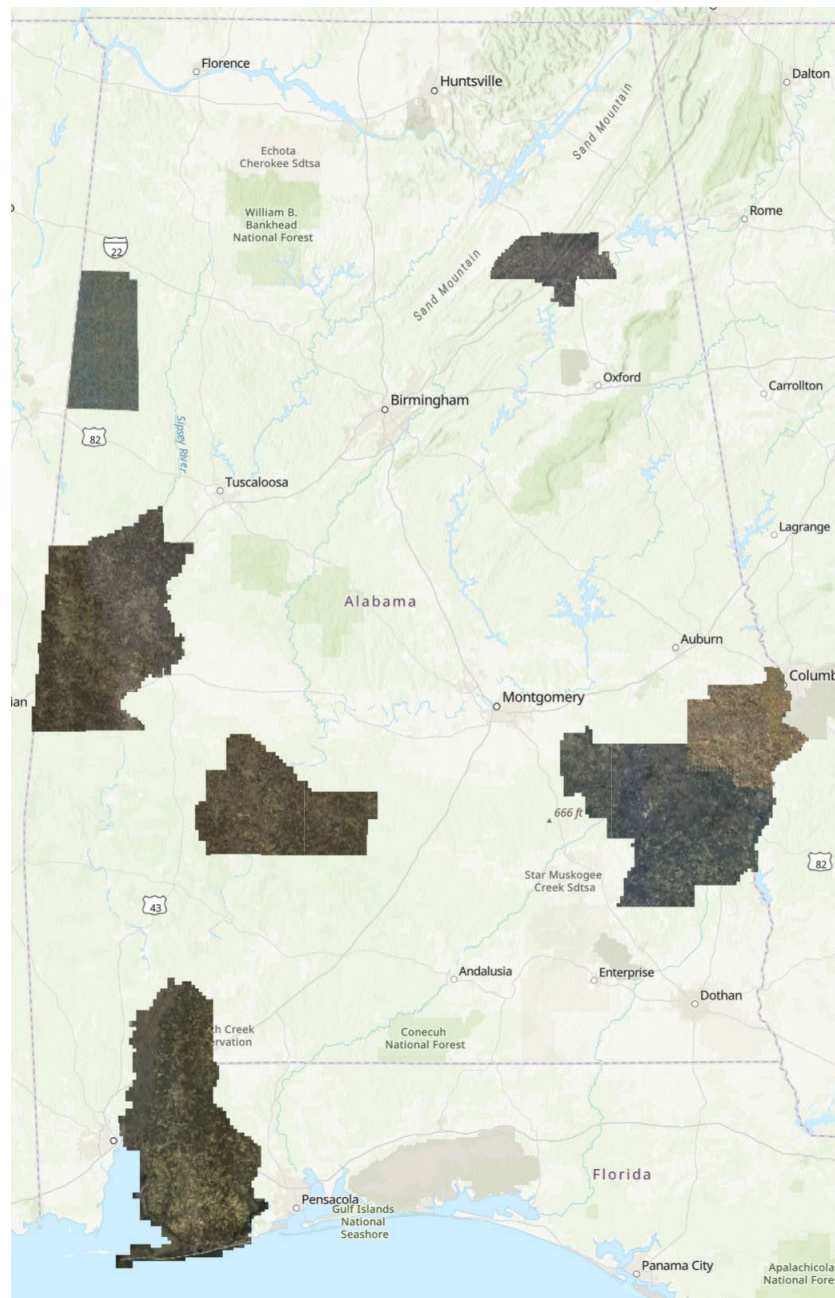


2016

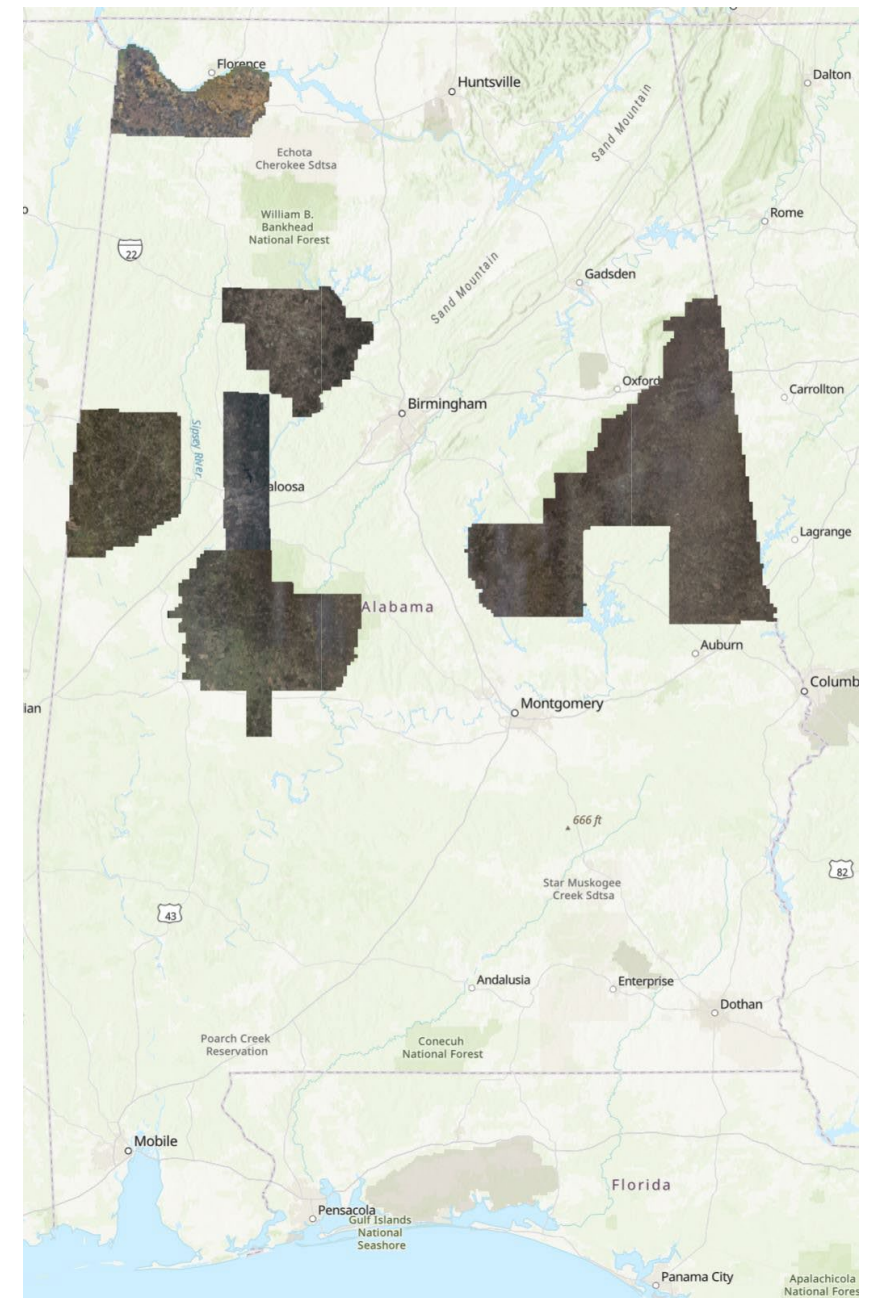




2017



2018







# Upcoming Training

Dates	Training	Location	Organization	Status	Flyer
February 21-24, 2022	Communications Unit Leader Course (COML)	Trussville, AL	Alabama EMA, FEMA, and ALERT	Open	<a href="#">More Info</a>
February 28-04, 2022	Fire and Emergency Services Instructor I	Montgomery, AL	Alabama 9-1-1 Board	Open	<a href="#">More Info</a>
February 28-02, 2022	Communications Center Manager Course (INCM)	Trussville, AL	Alabama EMA, FEMA, and ALERT	Open	<a href="#">More Info</a>
March 21-24, 2022	Information Technology Services Unit Leader Course (ITSL)	Trussville, AL	Alabama EMA, FEMA, and ALERT	Open	<a href="#">More Info</a>
March 21-23, 2022	NENA Supervisor Course	Huntsville, AL	Huntsville-Madison County 911	Open	<a href="#">More Info</a>





# Fire and Emergency Services Instructor I

February 28 – March 4, 2022  
Montgomery, AL

## New Training Opportunity for Telecommunicators

### Fire and Emergency Services Instructor I

This course is based on NFPA 1041: Standard for Fire Service Instructor Professional Qualifications, 2019 Edition. The course is designed for individuals who want to develop the knowledge and ability to deliver instruction effectively from a prepared lesson plan, including instructional aids and evaluation instruments; adapt lesson plans to the unique requirements of the students and the authority having jurisdiction; organize the learning environment so that learning is maximized; and meet the record-keeping requirements of the authority having jurisdiction.

This is a 40-hour sponsored by the Alabama 9-1-1 Board and taught through the Alabama Fire College. To fully participate in the required course activities, all students should bring a laptop with Microsoft Office with PowerPoint or equivalent and appropriate attire for a final presentation.

---

**Prerequisites:** High School Diploma/GED

**Equipment Needed:**

- Laptop with Microsoft Office with PowerPoint or equivalent
- Appropriate attire for final presentation

**Required Textbook:**

- Jones & Bartlett: Fire and Emergency Services Instructor, Principles and Practice, Third Edition

**Resources:**

- [Certification Course Syllabus](#)
- [Practical Exam Materials](#)

**When:** February 28 – March 4, 2022, 8:30 AM – 4:30 PM

**Where:** Alabama 9-1-1 Board  
1 Commerce Street, Suite 620  
Montgomery, AL 36104

**Registration:** Submit Course Application to Dana Nation – [dana@al911board.com](mailto:dana@al911board.com)

**Registration Deadline:** February 21, 2022

**For More Information:** Dana Nation, Program Coordinator  
Office: (334) 440-7911  
Email: [dana@al911board.com](mailto:dana@al911board.com)

---



# Questions

**Leah Missildine**

Executive Director for the  
Alabama 9-1-1 Board

[leah@al911board.com](mailto:leah@al911board.com)

Office: 334-440-7911

**Anderson Brooms**

GIS Program Manager for the  
Alabama 9-1-1 Board

[anderson@al911board.com](mailto:anderson@al911board.com)

Office: 334-440-7911

