

Geo-Routing: Events and the Next Generation of Call- Routing

Objectives of Alabama Next Generation Emergency Network (ANGEN 2.0)?

- Build a redundant, reliable, NG9-1-1 ESInet
- Next Generation 911 services provided:
 - Geo based routing
 - Location services
 - Legacy E9-1-1
 - Interoperability
 - Text for 9-1-1
 - Service visibility/monitoring/compliance
 - Provide a backup safety net for 9-1-1 services

The Simplified Current (Transitional) Method of Geo-Routing

1. The call comes into the network and is held for a ring cycle.
2. The database is dipped.
3. Call is then routed to the appropriate PSAP based on the coordinates that are presented in the database dip.

The Simplified End-State Method of Geo-Routing

1. Call comes into the network with an attached PIDF-LO (Presence Information Data Location Object) XML document.
2. The PIDF-LO is cross-referenced with the Location Verification Function (LVF).
3. The call is routed to the correct PSAP based on the verified coordinates during the cross-reference.

- Work needs to be done with the carriers and location providers to establish PIDF-LO handoff between carrier and network
- A spatial interface needs to be established to verify location data against the state GIS set.
- Call-Handling Systems must be upgraded to receive this new type of PIDF-LO based ALI.

How to get to the End State of Geo-Routing (Simplified)

Event Geo-Routing

Geo-routing Using MEVO Anywhere

Rock the South

Rock the South, an outdoor country music event, occurred on August 13th and 14th.

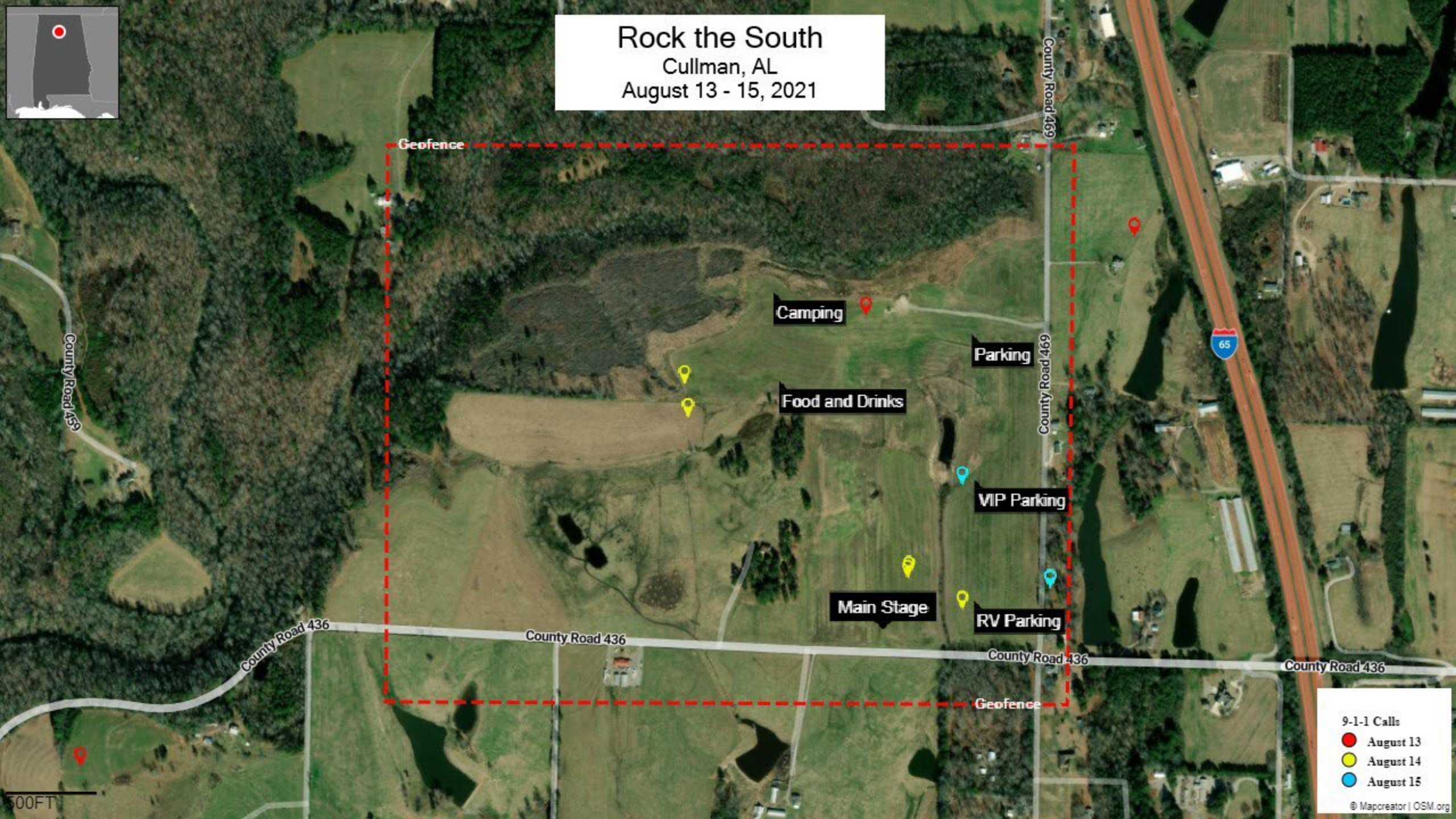
During this event, calls within the geofence were routed to a MEVO Anywhere Kit that was on site.

The boundary was activated and deactivated each day via a call to the NSOC from the personnel on-site.





Rock the South
Cullman, AL
August 13 - 15, 2021



9-1-1 Calls

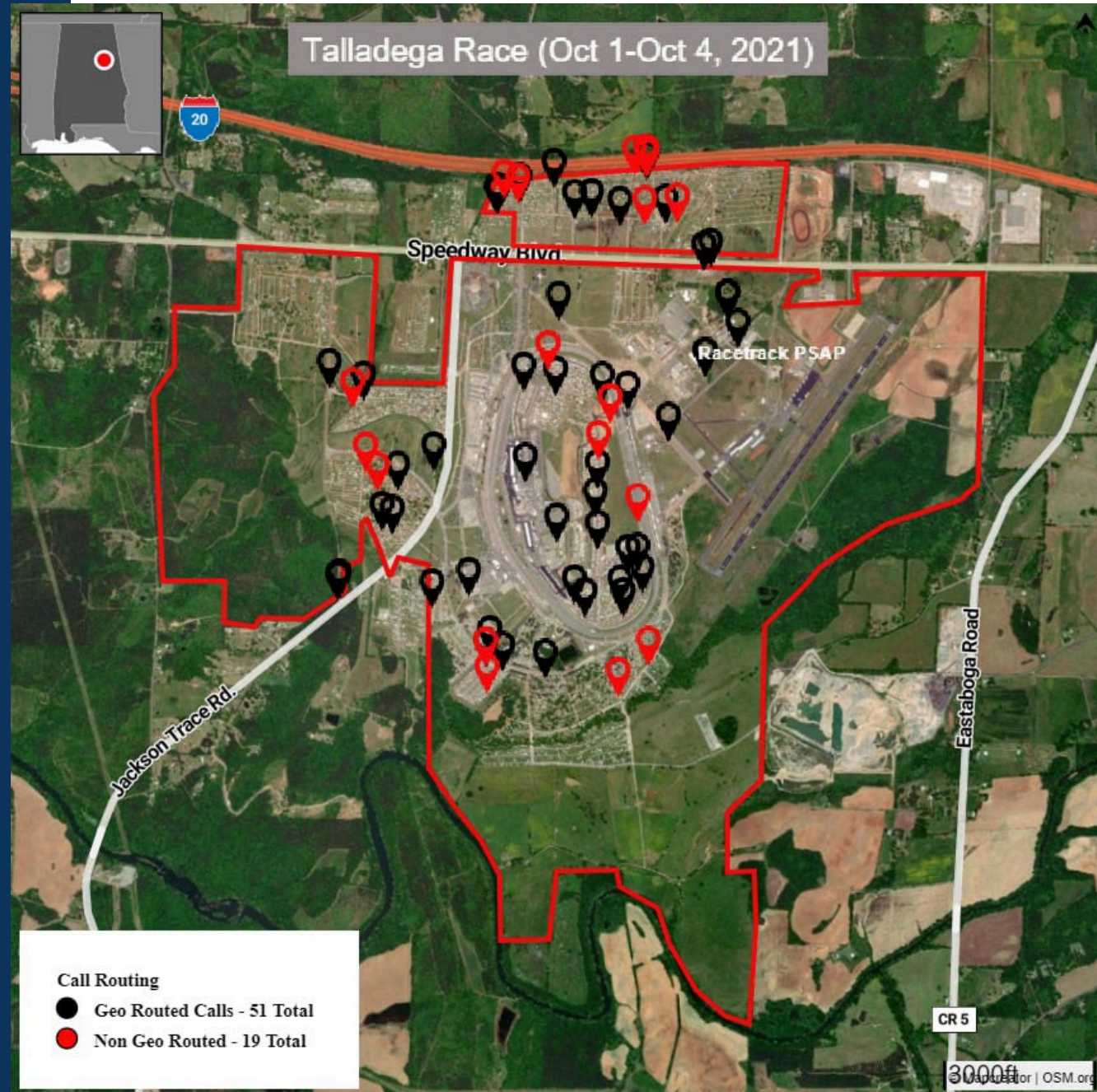
- August 13
- August 14
- August 15

© Mapcreator | OSM.org

Geo-routing to other PSAPs

Yellowwood 500

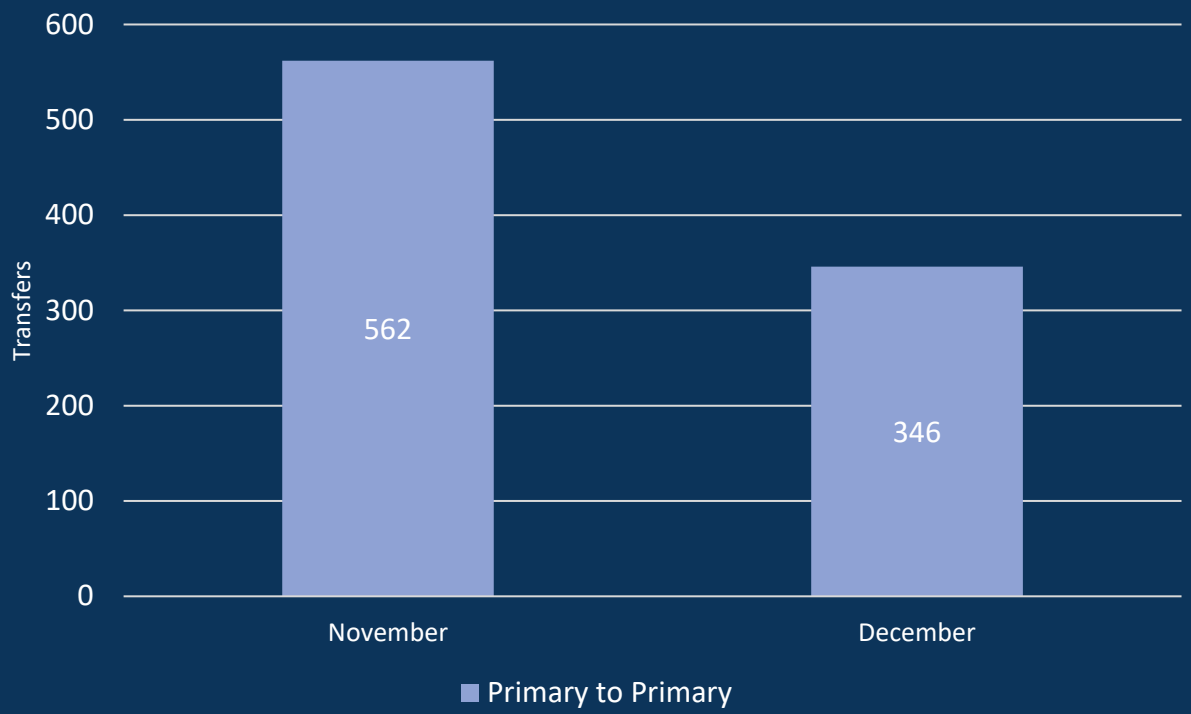
A total of 73% of the calls were geo-routed during the event



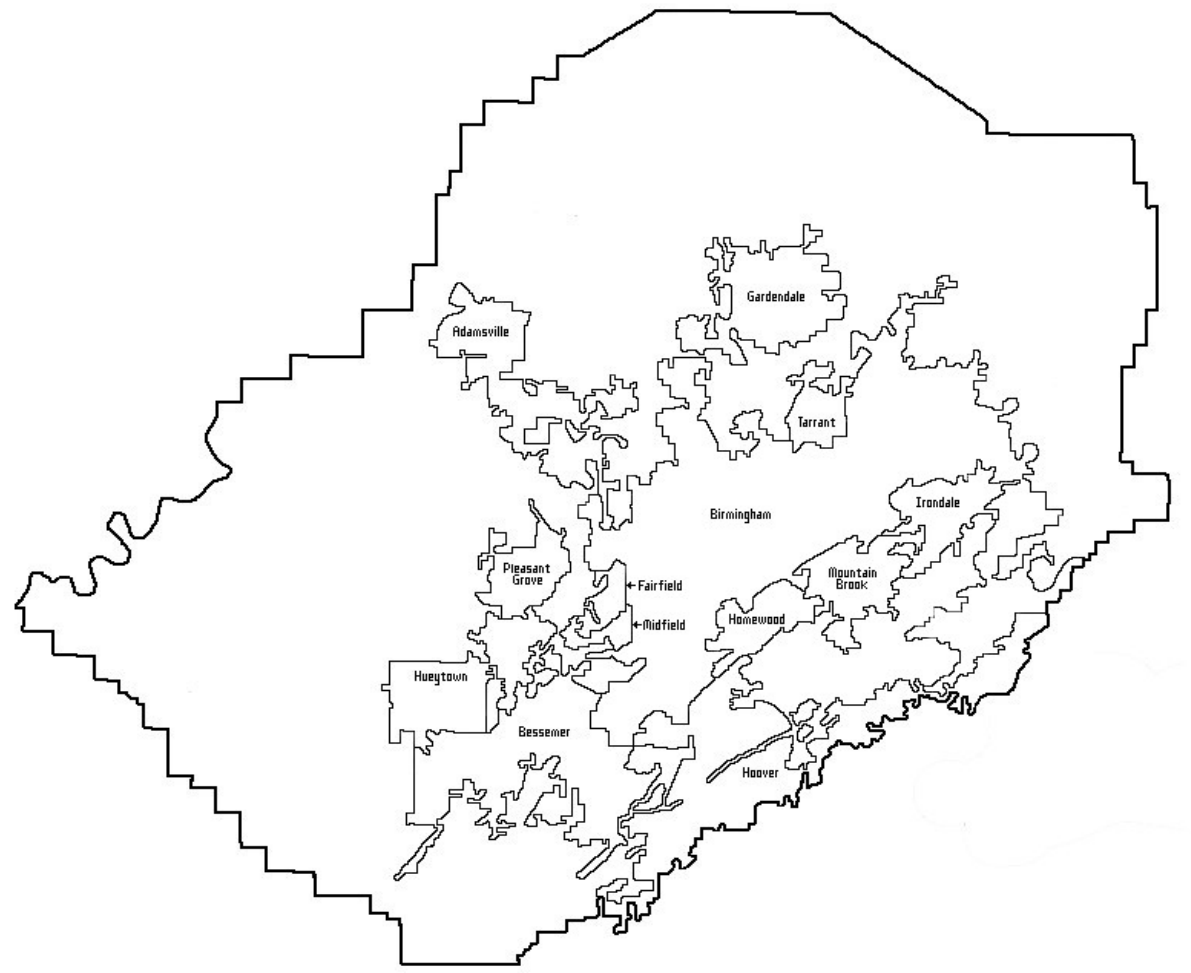
Permanent Geo-Routing

Significant Events

Jefferson County Transfers
Before and After Geo-Routing



A 38% decrease in transfer volume



Questions?

Contact Us

- 1616 Directors Row
- Fort Wayne, IN 46808

- 877.469.2010
- 256.276.6854

- cbranch@indigital.net

